



GMT MONTHLY MEMBERSHIP PROGRESS REPORT

Results as of: 2/29/2020

GMT Constitutional Area 6, Group O

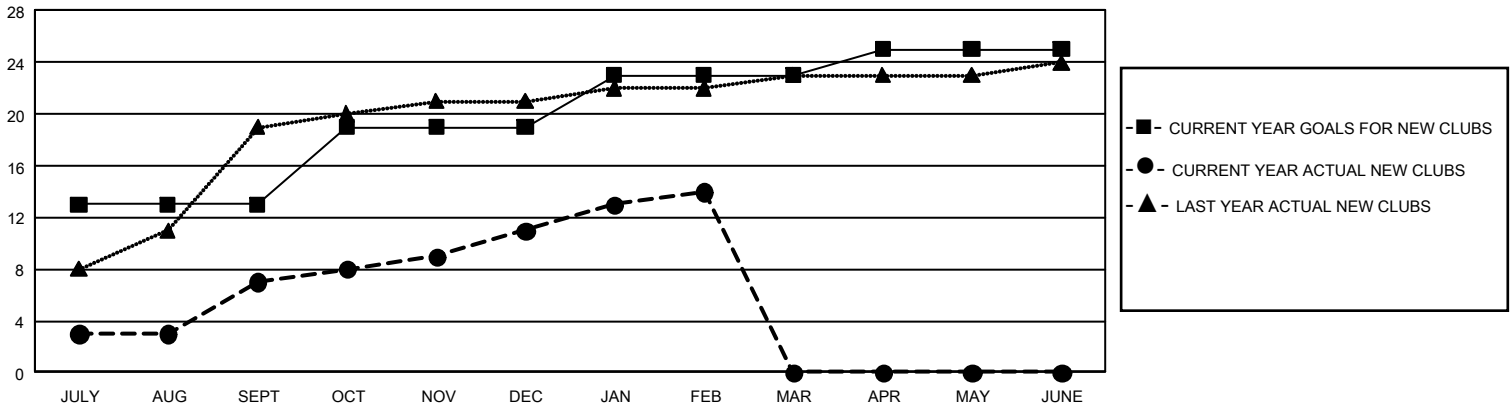
GMT: OPEN

REPORT DOES NOT INCLUDE CLUBS IN UNDISTRICTED AREAS.

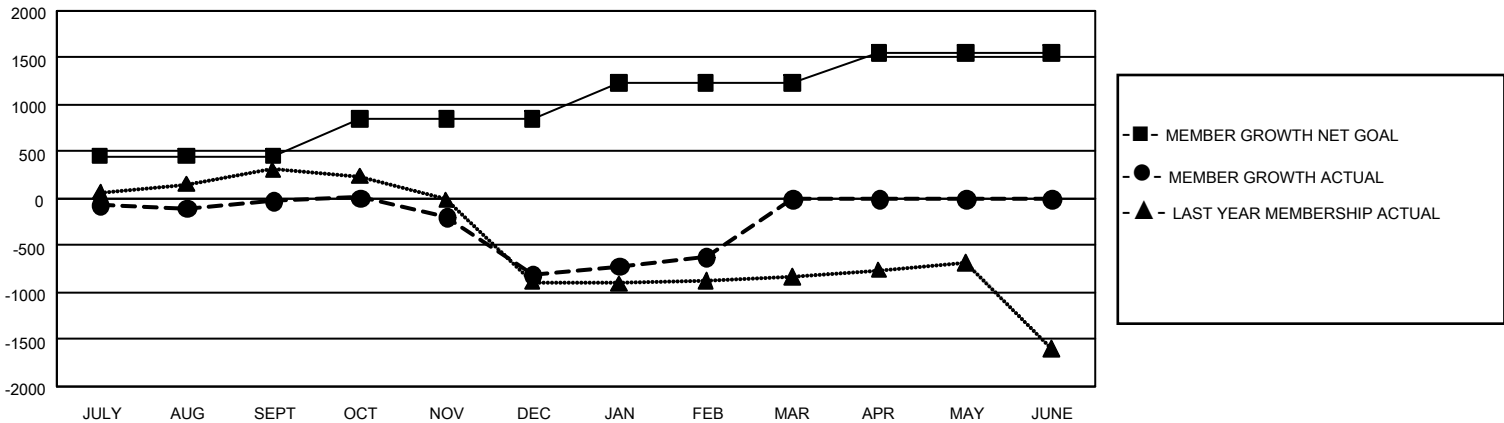
Clubs			
RESULTS FOR 2019-2020			
QUARTER	NEW CLUB GOAL	NEW CLUBS	DROPPED CLUBS
JULY/AUG/SEPT	39	7	0
OCT/NOV/DEC	18	4	17
JAN/FEB/MAR	12	3	4
APR/MAY/JUNE	6	0	0

Members			
RESULTS FOR 2019-2020			
QUARTER	MEMBER GROWTH NET GOAL	MEMBER GROWTH ACTUAL	DROPPED MEMBERS ACTUAL (including transfers)
JULY/AUG/SEPT	1,350	461	404
OCT/NOV/DEC	1,200	396	1,097
JAN/FEB/MAR	1,140	494	256
APR/MAY/JUNE	960	0	0

GOALS AND ACTUAL NEW CLUBS CUMULATIVE



GOALS AND ACTUAL MEMBERS CUMULATIVE



DROPPED CLUBS: 21	163 CLUBS OF 378 ADDED 1 OR MORE NEW MEMBERS	<u>GENDER DISTRIBUTION</u> MALE 10,378 (65.37%) FEMALE 5,498 (34.63%)
<u>DROPPED MEMBERS</u> DECEASED 13 CLUB CANCELLED 672 OTHER 1,072 <hr/> TOTAL 1,757	CLICK HERE FOR CUMULATIVE MEMBERSHIP DATA	TOTAL FAMILY UNIT MEMBERS 9,718 FAMILY MEMBERS PAYING HALF DUES 5,476